

ADDENDA to

Gas Safety Incorporated

16 Brook Lane, Southborough, Massachusetts 01772
774-922-4626 www.GasSafetyUSA.com

Report to
Damascus Citizens for Sustainability
25 Main Street, Narrowsburg, New York 12764

Baseline Methane Emissions in Town of Hancock, Delaware County, New York

September 2014
Bryce F. Payne Jr., Ph.D.¹ and Robert Ackley²

This material looks at data collected before and after the compressor station was built on Hungry Hill Road, Hancock, NY.

FROM the report cited above:

There was another area with elevated methane levels along Hoolihan Brook Road that had an unusual number of relatively minor increases in methane concentration (Figure 4). The highest methane level encountered on Hoolihan Brook Road was 2.24 ppm. The slightly higher methane levels in this area could have been due to methane emissions from the brook, geological methane seepage, or drift from the parallel valley to the west where minor elevations were detected on 16 September and higher levels, up to 2.88 ppm, when this limited area was surveyed again on 18 September (Figure 4). The increased methane levels were associated with the location of the natural gas pipeline compressor station on Hungry Hill Road. When this area was previously surveyed on 03 June 2013, before the compressor station was built, no unusual methane levels were encountered in the area.

FOLLOWING are 4 figures showing the initial baseline data collected June 3, 2013 (Figure 1) and then data collected after the compressor was installed — Figure 2 showing Figure 1 data overlaid with data collected September 16, 2014 — Figure 3 is Figure 2 overlaid with data collected September 18 and Figure 4 shows data in Figure 3 plus data from the next valley along Hoolihan Brook Road which could be a plume from the compressor on Hungry Hill Road. All views are looking down the pipeline to the southeast.

¹ Director of Science and Technology, Gas Safety, Inc., bryce.payne@gassafetyusa.com; Consulting and research in environmental science since 1992. bryce.payne@wilkes.edu; Senior Fellow of the Wake Forest University Center of Energy, Environment, and Sustainability, Winston-Salem, NC.

² President of Gas Safety, Inc. with 30 years experience in gas leak detection and measurement, related regulatory compliance, and training.

Figure 1 – initial baseline data collected June 3, 2013 along Hungry Hill Road in the area of the soon to be placed compressor station, looking down the pipeline to the southeast.

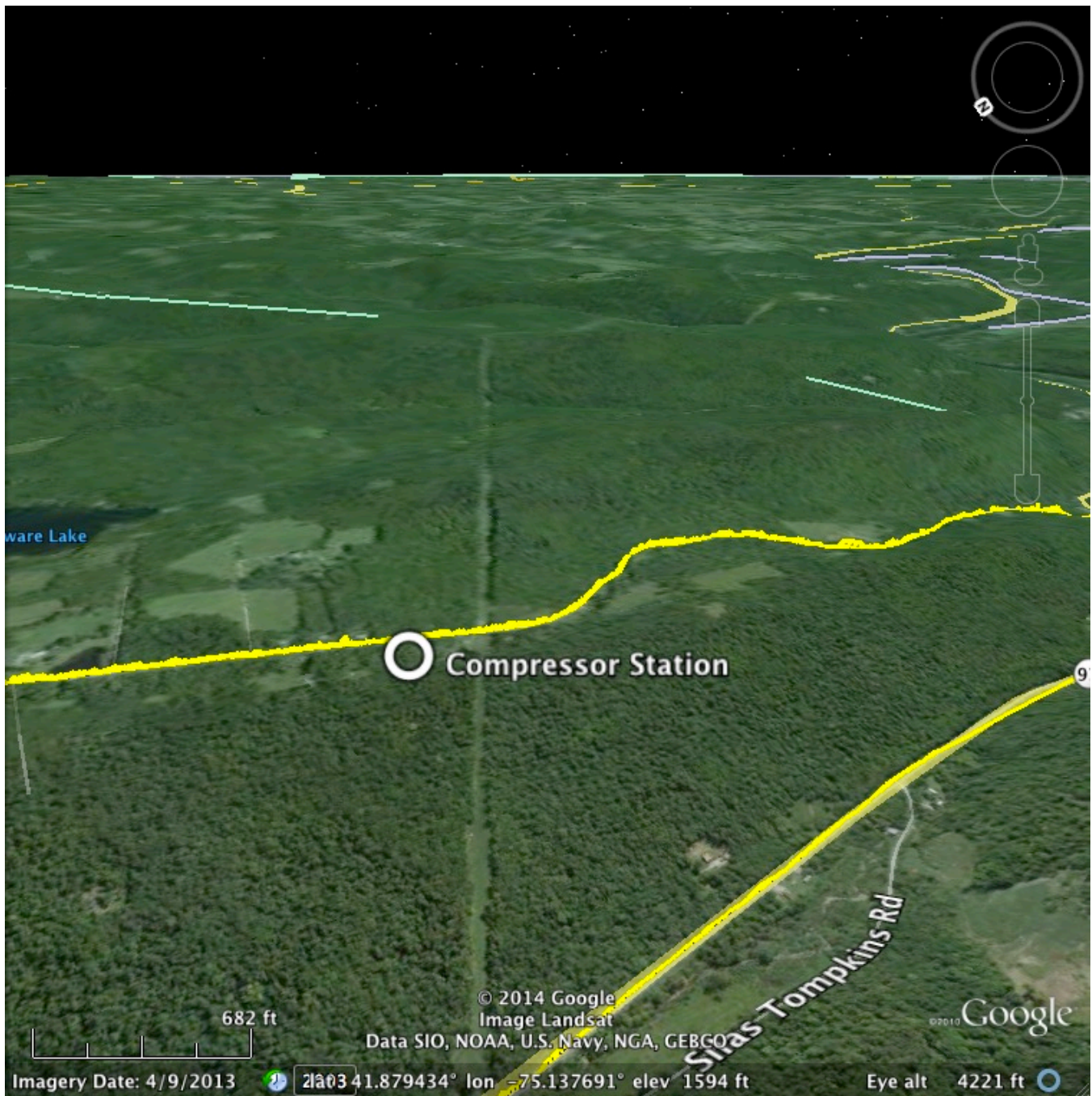


Figure 2 — showing Figure 1 data overlaid with data collected September 16, 2014 (after the compressor was installed). View is looking down the pipeline to the southeast.

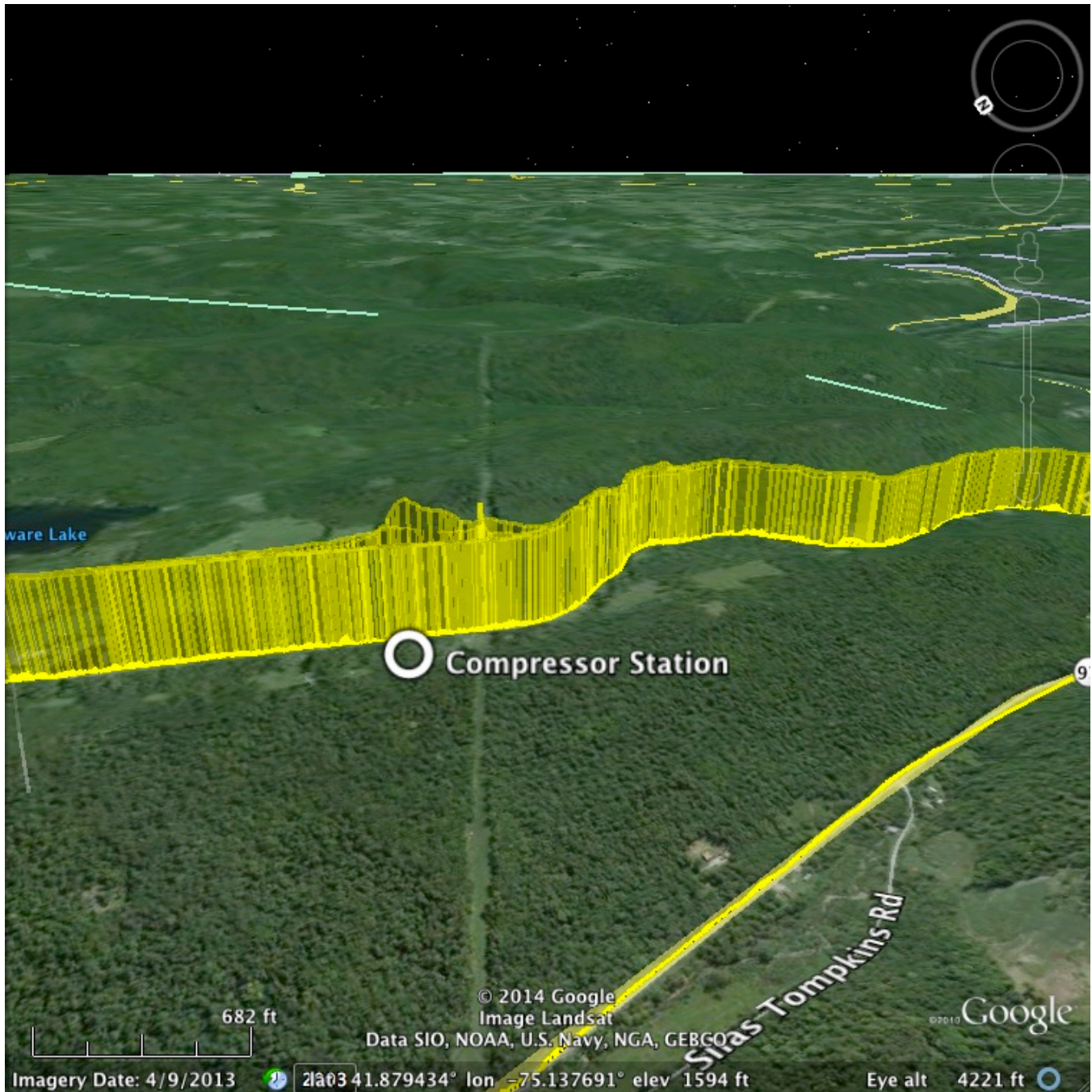


Figure 3 — is Figure 2 overlaid with data collected September 18. So you are seeing the initial baseline before the compressor, and Sept 16 and Sept 18 data after the compressor was installed. View is looking down the pipeline to the southeast.

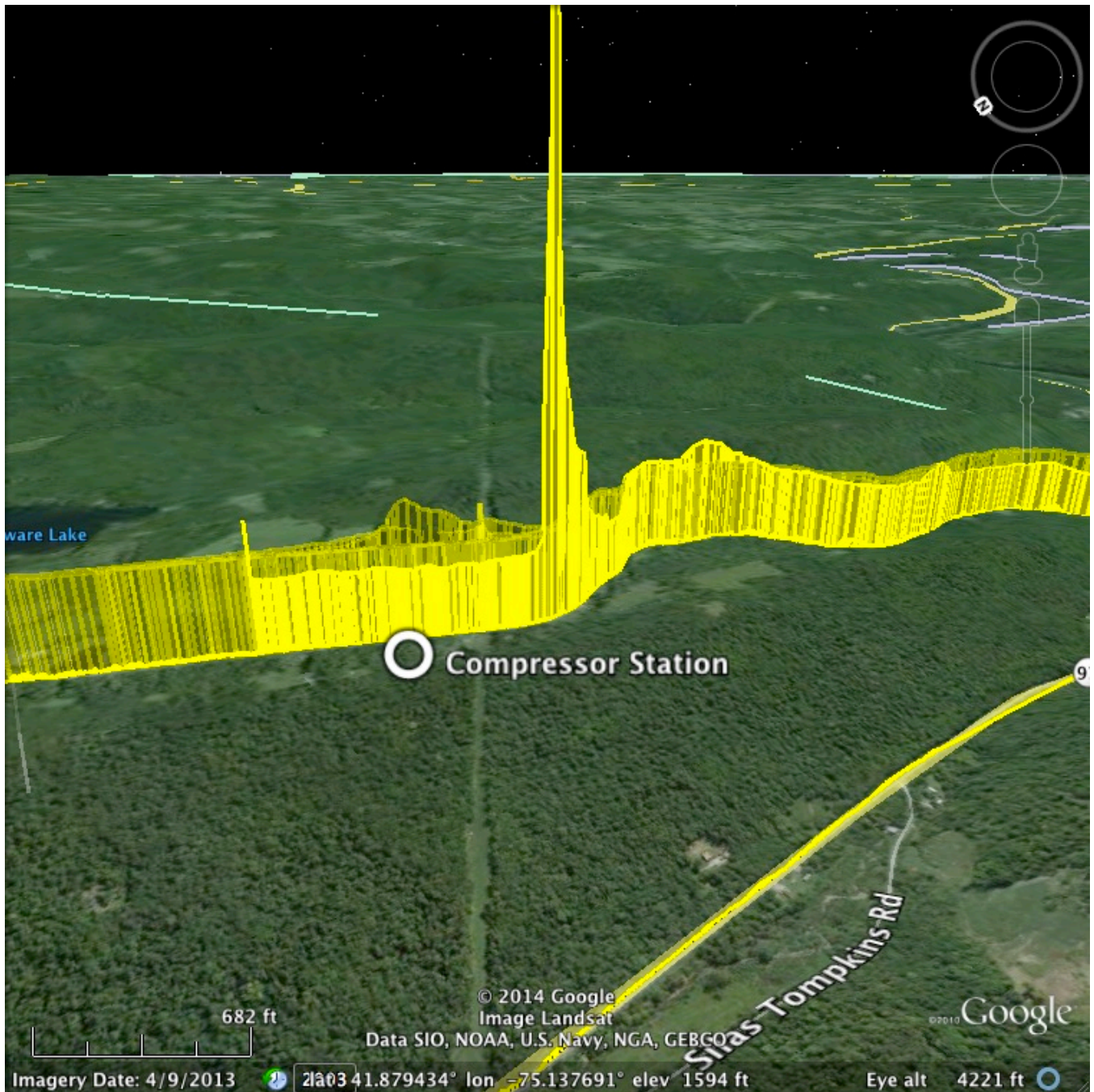


Figure 4 — shows data in Figure 3 plus data (collected September 2014) from the next valley along Hoolihan Brook Road which could be a plume from the compressor on Hungry Hill Road. View is looking down the pipeline to the southeast.

